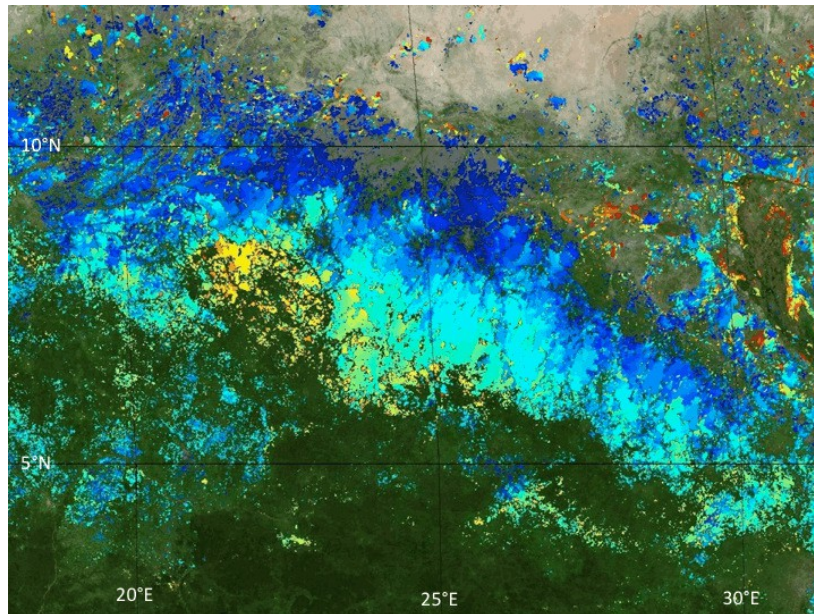


Collection 6.1 MODIS Burned Area Product User's Guide

Version 1.1

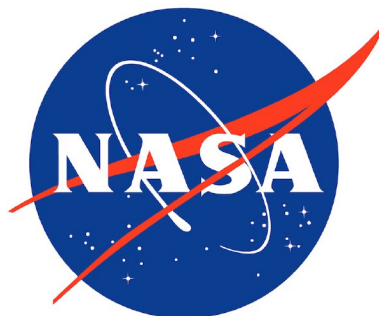


Louis Giglio
Michael Humber
Joanne V. Hall
Fernanda Argueta
University of Maryland

Luigi Boschetti
University of Idaho

David Roy
Michigan State University

November 2022



Technical Contacts

Topic	Contact
Algorithm and HDF product	Louis Giglio (lgiglio@umd.edu)
GeoTIFF and Shapefile product	Michael Humber (mhumber@umd.edu)
Product validation	Luigi Boschetti (luigi@uidaho.edu)

Abbreviations and Acronyms

BA	Burned Area
CMG	Climate Modeling Grid
EOS	Earth Observing System
EOSDIS	EOS Data Information System
GeoTIFF	Georeferenced Tagged Image File Format
HDF	Hierarchical Data Format
LP-DAAC	Land Processes Distributed Active Archive Center
MODIS	Moderate Resolution Imaging Spectroradiometer
SDS	Science Data Set
QA	Quality Assessment

Document Change History

Version	Date	Description
1.0	5/2021	Original version adapted from C6 guide, version 1.3.
1.1	11/2022	Updated to reflect completion of C6.1 reprocessing and for ENVI 5.5.

Title page image: MCD64A1 cumulative area burned in the Central African Republic and South Sudan during the 2004–2005 burning season.

Contents

1	Introduction	6
1.1	Summary of Collection 6.1 Algorithm and Product Changes	6
1.1.1	Reprocessing Schedule	6
1.2	Terminology	8
1.2.1	Granules	8
1.2.2	Tiles	8
1.2.3	Collections	9
1.2.4	Climate Modeling Grid (CMG)	9
2	MCD64A1 Algorithm Summary	9
3	MCD64 Product Suite	9
3.1	Level 3 Monthly Tiled Product: MCD64A1	10
3.1.1	Naming Convention	10
3.1.2	Data Layers	11
3.1.3	Metadata	12
3.1.4	Example Code	13
3.2	GeoTIFF subset for GIS visualization and analysis: MCD64monthly	17
3.2.1	Naming Convention	17
3.2.2	Example Code	18
3.3	Shapefile subset for GIS visualization and analysis: MCD64monthly	19
3.3.1	Naming Convention	19
3.4	MCD64CMQ Climate Modeling Grid Burned Area Product	20
3.4.1	Naming Convention	20
3.4.2	Global Grid	20
3.4.3	Data Layers	20
3.4.4	Metadata	21
3.4.5	Example Code	22
4	Obtaining the MODIS Burned Area Products	24
4.1	Downloading the products from the fuoco SFTP server	24
4.1.1	HDF Files	25
4.1.2	GeoTIFF files and Shapefiles	25
4.1.3	Example sftp command line session	26
5	Working with the product in ENVI 5.5	27
5.1	MCD64A1 (HDF)	27
5.2	MCD64monthly (GeoTIFF)	28
5.3	MCD64monthly (Shapefile)	28
6	Working with the product in ArcGIS	30
6.1	MCD64A1 (HDF)	30
6.1.1	ArcGIS Pro	30
6.1.2	ArcGIS ArcMap Desktop	32

6.2	MCD64monthly (GeoTIFF)	32
6.2.1	Area of Interest (AoI)	32
6.3	MCD64monthly (Shapefile)	33
7	Validation of the MODIS Burned Area Product	35
8	Known Problems	35
8.1	Cropland Burning	35
8.2	Pre-November 2000 Mission Period	35
8.3	June 2001 Terra MODIS Outage	35
8.4	August 2020 Aqua Outage	36
9	Frequently Asked Questions	36
10	References	37
11	Relevant Web and FTP Sites	38
Appendix A	Coverage of the GeoTIFF subsets	39
Appendix B	Coordinate conversion for the MODIS sinusoidal projection	40
B.1	Forward Mapping	40
B.2	Inverse Mapping	40
B.3	Applicability to 250-m and 1-km MODIS Products	41

List of Tables

1	Sizes of grid cells in Level 3 tiled MODIS sinusoidal grid.	8
2	Day-of-year of the first day of each calendar month.	10
3	MCD64A1 metadata stored as standard global HDF attributes.	12
4	MCD64CMQ metadata stored as standard global HDF attributes.	21
5	Regions and bounding coordinates of the GeoTIFF subsets.	39

List of Figures

1	Collection 6 and Collection 6.1 MCD64A1 monthly global burned area time series.	7
2	Scatter plots of per-tile Collection-6.1 versus Collection-6 burned area.	7
3	MODIS tiling scheme.	8
4	Coverage of the GeoTIFF subsets.	17
5	ENVI 5.5 example Dataset Browser.	27
6	ENVI 5.5 Classic example Dataset Browser and image display.	28
7	ENVI 5.5 Shapefile import example	29
8	Importing HDF data into ArcGIS Pro.	30
9	Selecting the HDF <i>Burn Date</i> layer in ArcGIS Pro.	31
10	January 2021 MCD64A1 <i>Burn Date</i> layer for MODIS tile h16v07 displayed in ArcGIS Pro.	32
11	ArcGIS Pro export raster window.	33

12	ArcGIS ArcMap export raster window.	34
13	MCD64monthly Shapefile superimposed over Sentinel-2 image.	34
14	Representative Direct Broadcast coverage during 2020 Aqua outage.	36

1 Introduction

This document contains the most current information about the Collection 6.1 Moderate Resolution Imaging Spectroradiometer (MODIS) Burned Area product suite. It is intended to provide the end user with practical information regarding the use (and misuse) of the products, and to explain some of the more obscure and potentially confusing aspects of the burned area products and MODIS products in general.

1.1 Summary of Collection 6.1 Algorithm and Product Changes

Initially driven by calibration issues that impacted the MODIS atmosphere products, a Collection 6.1 “mini-reprocessing” was initiated in 2018 and later expanded to include the MODIS land products. For the land-product suite the changes under Collection 6.1 are largely confined to the MODIS Level-1B calibrated radiance products (e.g., MOD021KM) from which the various land products are derived.

The MODIS MCD64A1 burned area product is among those for which neither algorithm nor product changes were made for Collection 6.1, and as such the Collection 6.1 MCD64A1 product is largely unchanged from its Collection-6 predecessor (Figure 1). The small differences that occur across the two collections are the result of the following changes:

1. The product is generated using the Collection 6.1 MODIS surface reflectance and active fire products as inputs. The former in particular changed slightly as a result of 1) the changes made to the upstream Collection-6.1 MODIS Level-1B calibrated radiance products, and 2) minor bug fixes made to the surface reflectance production software.
2. For Collection 6, during some product months not all of the required MODIS active-fire input files were properly staged within MODAPS for use as inputs to the MCD64A1 production software. For Collection 6.1 this minor error was corrected, leading in some instances to a few extra days of active fire observations at the beginning of the daily time series considered by the MCD64A1 mapping algorithm.
3. The initially delivered Collection 6 MCD64A1 production software contained a bug that caused burned grid cells in columns 0 and/or 2399 (the left-most and right-most columns) of 26 specific MODIS land tiles to be incorrectly relabeled as unburned. A bug fix was implemented in September 2018 but applied only to the forward processing stream. With Collection 6.1 this problem has been resolved for the entire mission period.

The net result of the above changes is that the Collection 6 and Collection 6.1 MCD64A1 products are sufficiently consistent to be intermixed *for many purposes*. This consistency can be seen in the right panel of Figure 2, where we have selected the MCD64A1 product for August 2003 as a representative example. The sole exception to the otherwise excellent agreement occurred for the November 2000 product, which proved to be an isolated anomaly. We traced the atypical discrepancies observed for this month to the Collection 6.1 MODIS surface reflectance product, which is an input to the MCD64A1 mapping algorithm. It is not yet clear why the Collection-6.1 surface reflectance product differed more significantly for just this particular time period.

1.1.1 Reprocessing Schedule

The Collection-6 MCD64A1 product will remain in forward production through December 2022 while the Collection-6.1 reprocessing of historical MODIS data is underway. After this date forward production of all MODIS Land products (including MCD64A1) will continue via the Collection 6.1 reprocessing exclusively.

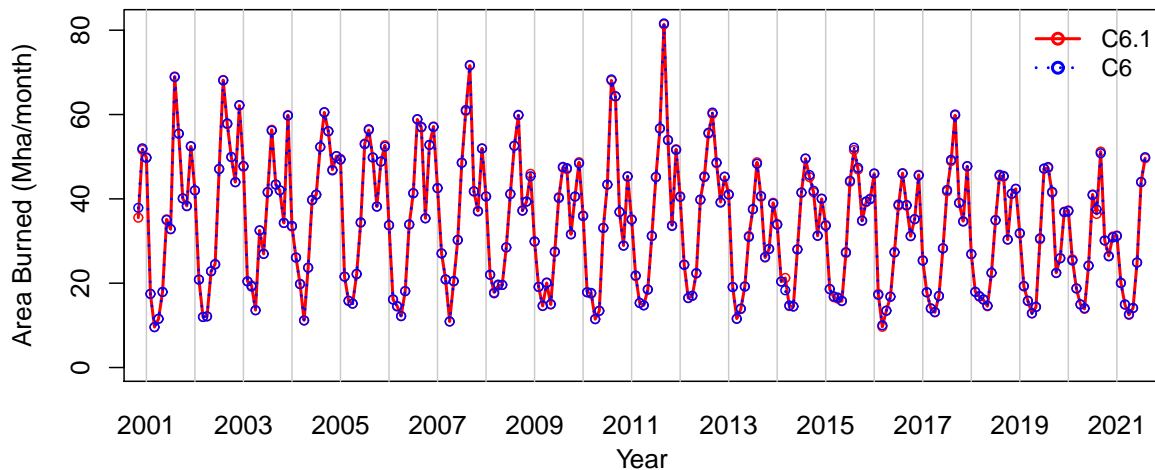


Figure 1: Collection 6 (blue dotted lines) and Collection 6.1 (red solid lines) MCD64A1 monthly global burned area time series for the first 21-years of the MODIS data record.

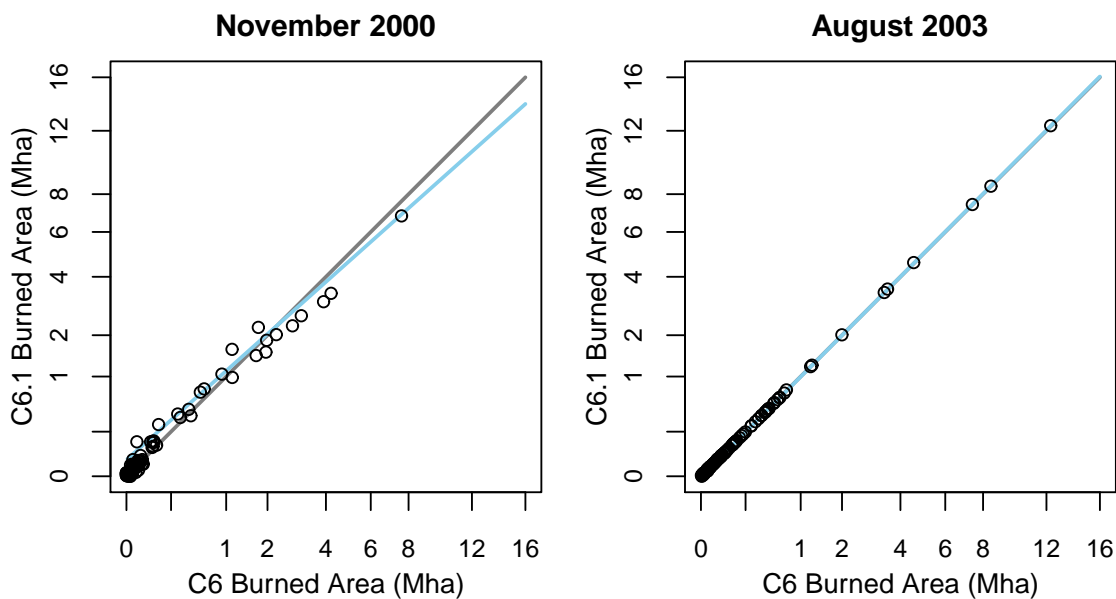


Figure 2: Scatter plots of per-tile Collection-6.1 (C6.1) versus Collection-6 (C6) MCD64A1 total burned area for November 2000 (left panel) and August 2003 (right panel). Each circle represents a tile (e.g., h08v05) on the MODIS sinusoidal grid during the specified calendar month. The gray and light blue lines indicate the 1:1-reference and least-squares regression lines, respectively. The August 2003 example is highly representative of the Collection-6.1 product in general. In contrast the November 2000 case is an isolated anomaly for which the differences are much more pronounced.

1.2 Terminology

1.2.1 Granules

A *granule* is an unprojected segment of the MODIS orbital swath containing about 5 minutes of data. MODIS Level 0, Level 1, and Level 2 products are granule-based.

1.2.2 Tiles

MODIS Level 2G, Level 3, and Level 4 products are defined on a global 250-m, 500-m, or 1-km sinusoidal grid (the particular spatial resolution is product-dependent). Because these grids are unmanageably large in their entirety (43200×21600 pixels at 1 km, and 172800×86400 pixels at 250 m), they are divided into fixed tiles approximately $10^\circ \times 10^\circ$ in size. Each tile is assigned a horizontal (H) and vertical (V) coordinate, ranging from 0 to 35 and 0 to 17, respectively (Figure 3). The tile in the upper left (i.e. northernmost and westernmost) corner is numbered (0,0).

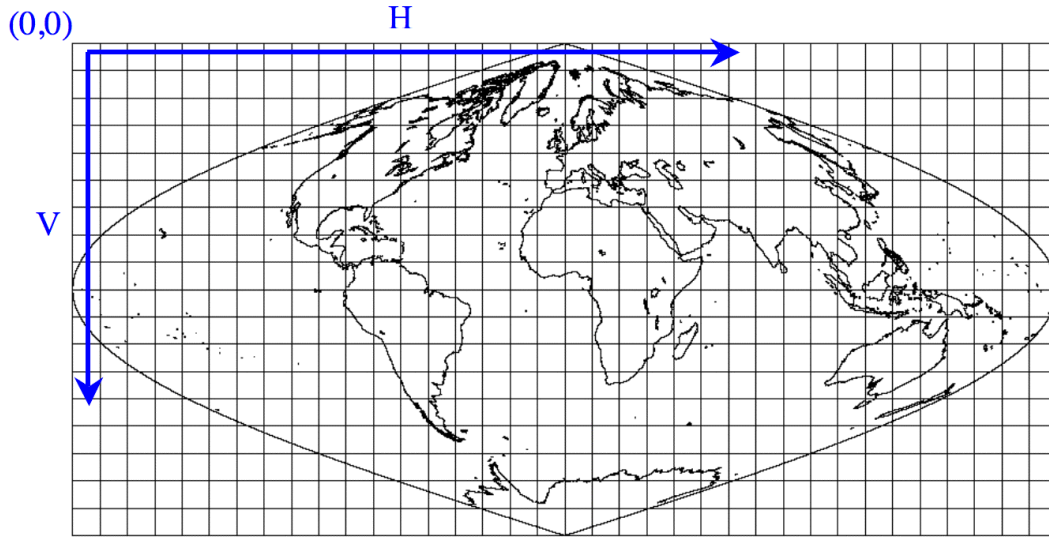


Figure 3: MODIS tiling scheme.

Note that the Level 3 MODIS products generated on the MODIS sinusoidal grid are colloquially referred to as having “1 km”, “500 m”, and “250 m” grid cells. The exact cell sizes are shown in Table 1.

Table 1: Sizes of grid cells in Level 3 tiled MODIS sinusoidal grid.

Colloquial Size	Actual Size (m)
“1 km”	926.62543305
“500 m”	463.31271653
“250 m”	231.65635826

1.2.3 Collections

Reprocessing of the entire MODIS data archive is periodically performed to incorporate better calibration, algorithm refinements, and improved upstream data into all MODIS products. The updated MODIS data archive resulting from each reprocessing is referred to as a *collection*. Later collections supersede all earlier collections.

Neither the MCD45A1 nor MCD64A1 MODIS burned area product was produced in Collections 1 through 4. Both products were produced for the first time as part of Collection 5. For Collection 6 the MCD45A1 burned area product was retired and replaced with MCD64A1.

1.2.4 Climate Modeling Grid (CMG)

MODIS Level 3 and Level 4 products can also be defined on a coarser-resolution *climate modelling grid* (CMG). The objective is to provide the MODIS land products at consistent low resolution spatial and temporal scales suitable for global modeling. In practice, there is a fair amount of variation in the spatial and temporal gridding conventions used among the MODIS land CMG products.

2 MCD64A1 Algorithm Summary

The MCD64 burned-area mapping approach employs 500-m MODIS imagery coupled with 1-km MODIS active fire observations. The hybrid algorithm applies dynamic thresholds to composite imagery generated from a burn-sensitive vegetation index (VI) derived from MODIS short-wave infrared channels 5 and 7, and a measure of temporal texture. The VI is defined as

$$VI = \frac{\rho_5 - \rho_7}{\rho_5 + \rho_7},$$

where ρ_5 and ρ_7 are respectively the band 5 and band 7 atmospherically corrected surface reflectance. Cumulative active fire maps are used to guide the selection of burned and unburned training samples and to guide the specification of prior probabilities. The combined use of active-fire and reflectance data enables the algorithm to adapt regionally over a wide range of pre- and post-burn conditions and across multiple ecosystems. See Giglio et al. (2018) for a complete description of the algorithm.

The mapping algorithm ultimately identifies the date of burn, to the nearest day, for 500-m grid cells within the individual MODIS tile being processed. The date is encoded in a single data layer of the output product as the ordinal day of the calendar year on which the grid cell burned (range 1-366), with a value of 0 for unburned land grid cells and additional special values reserved for missing-data and water grid cells. The output product contains additional data layers for diagnostic purposes and to facilitate uncertainty propagation into downstream products derived from the burned area maps, such as emissions estimates.

3 MCD64 Product Suite

Three different versions of the MODIS burned area product are available:

- The official MCD64A1 product in HDF-EOS format, which is available as part of the MODIS suite of global land products.
- The re-projected monthly GeoTIFF version available from the University of Maryland.
- The re-projected monthly Shapefile version available from the University of Maryland.

3.1 Level 3 Monthly Tiled Product: MCD64A1

The MCD64A1 Burned Area Product is a monthly, Level-3 gridded 500-m product containing per-pixel burning and quality information, and tile-level metadata.

3.1.1 Naming Convention

The file naming convention, which has been adopted by all standard MODIS products, is as follows:

MCD64A1.AYYYYDDD.hHHvVV.061.PPPPPPPPPPPP.hdf

where

YYYY = year mapped

DDD = start day-of-year (ordinal day) of calendar month in which burns have been mapped (Table 2)

HH = horizontal tile coordinate on MODIS sinusoidal grid

VV = vertical tile coordinate on MODIS sinusoidal grid

061 = collection identifier

PPPPPPPPPPPPP = production date¹

Example: The product file MCD64A1.A2006244.h31v10.061.2021106034604.hdf contains the September 2006 burned area map for MODIS tile h31v10, located in northern Australia.

Table 2: Day-of-year (DOY) of the first day of each calendar month. The DDD field (see above) in the file names of the MCD64 products will always have one of the 22 unique values shown here.

Month	Non-Leap Year	Leap Year
	Start DOY	Start DOY
January	1	1
February	32	32
March	60	61
April	91	92
May	121	122
June	152	153
July	182	183
August	213	214
September	244	245
October	274	275
November	305	306
December	335	336

¹This naming convention ensures that files always have a unique name: if a tile is reprocessed the last number, indicating the day and time in which the file was processed, will be different, thus avoiding any confusion with obsolete data.

3.1.2 Data Layers

The product contains five data layers (*Burn Date*, *Burn Date Uncertainty*, *QA*, *First Day*, and *Last Day*), each stored as a separate HDF4 Scientific Data Set (SDS).

Burn Date: Ordinal day of burn (1-366) for each 500-m grid cell, with 0 = unburned land, -1 = unmapped due to insufficient data, and -2 = water.

Burn Date Uncertainty: Estimated uncertainty in date of burn, in days. Unburned and unmapped grid cells will always have a value of 0 in this layer.

QA: 8-bit quality assurance bit field.

bit 0: 0 = water grid cell, 1 = land grid cell.

bit 1: Valid data flag (0 = false, 1 = true). A value of 1 indicates that there was sufficient valid data in the reflectance time series for the grid cell to be processed. (NB. Water grid cells will always have this bit clear.)

bit 2: Shortened mapping period (0 = false, 1 = true). This flag indicates that the period of reliable mapping does not encompass the full one-month product period, i.e., burns could not be reliably mapped over the full calendar month.

bit 3: Grid cell was relabeled during the contextual relabeling phase of the algorithm (0 = false, 1 = true).

bit 4: Spare bit set to 0.

bits 5–7: Special condition code reserved for unburned grid cells. This code provides an explanation for any grid cells that were summarily classified as *unburned* by the detection algorithm due to special circumstances.

0: None or not applicable (i.e., burned, unmapped, or water grid cell).

1: Valid observations spaced too sparsely in time.

2: Too few training observations or insufficient spectral separability between burned and unburned classes.

3: Apparent burn date at limits of time series.

4: Apparent water contamination.

5: Persistent hot spot.

6: Reserved for future use.

7: Reserved for future use.

First Day and Last Day: The *First Day* and *Last Day* SDSs indicate the first and last days, respectively, on which changes could be reliably detected within the time series, on a per-grid-cell basis. Note that during periods of persistent cloud cover or frequent data loss, these dates will often lie within the calendar month that was mapped, indicating that reliable mapping could not be achieved over the full month.

3.1.3 Metadata

As with standard MODIS products, the MCD64A1 product contains global metadata stored in the ECS *CoreMetadata.0* and *ArchiveMetadata.0* global attributes. For convenience, a subset of these metadata as well as additional metadata are stored as standard HDF global attributes (Table 3).

Table 3: MCD64A1 metadata stored as standard global HDF attributes.

Attribute Name	Description
BurnedCells	Number of burned 500-m land grid cells during product month.
MissingCells	Number of 500-m land grid cells during product month having too few valid observations for algorithm to function.
LandCells	Number of 500-m land grid cells in tile.
ValidLandCells	Number of 500-m land grid cells for which mapping could be performed.
ProductStartDay	Ordinal start day of product calendar month (range 1 – 336).
ProductEndDay	Ordinal end day of product calendar month (range 31 – 366).
year	Product year.
tile	Six-character tile descriptor, e.g., “h20v11”.

3.1.4 Example Code

Example 1: IDL code to read a global attribute and two SDSs in the MCD64A1 product.

```
mcd64a1_file = 'MCD64A1.A2006213.h20v11.061.2021308225836.hdf'

sd_id = HDF_SD_START(mcd64a1_file, /READ)

; read "BurnedCells" attribute
attr_index = HDF_SD_ATTRFIND(sd_id, 'BurnedCells')
HDF_SD_ATTRINFO, sd_id, attr_index, DATA=burned_cells

; convert 1-element vector to scalar
burned_cells = burned_cells[0]

index = HDF_SD_NAMETOINDEX(sd_id, 'Burn Date')
sds_id = HDF_SD_SELECT(sd_id, index)
HDF_SD_GETDATA, sds_id, burn_date
HDF_SD_ENDACCESS, sds_id

index = HDF_SD_NAMETOINDEX(sd_id, 'QA')
sds_id = HDF_SD_SELECT(sd_id, index)
HDF_SD_GETDATA, sds_id, QA
HDF_SD_ENDACCESS, sds_id

HDF_SD_END, sd_id

help, burned_cells, burn_date, QA
```

The code produces the following output:

```
BURNED_CELLS    LONG           =          101302
BURN_DATE       INT             = Array[2400, 2400]
QA              BYTE            = Array[2400, 2400]
```

Example 2: Python code to read the *Burn Date* and *QA* SDSs in the MCD64A1 product.

```
import gdal
import numpy as np

in_file = "MCD64A1.A2006244.h31v10.061.2021106034604.hdf"

hdf_handle = gdal.Open(in_file)

# Print a list of all of the datasets within the hdf file
sds_list = hdf_handle.GetSubDatasets()
for sds in sds_list:
    print(sds)

# Open a subdataset "N" as an array with sds_list[N][0], values of N are:
# 0 = 'Burn Date', 1 = 'Burn Date Uncertainty', 2 = 'QA',
# 3 = 'First Day', 4 = 'Last Day'
burndate_handle = gdal.Open(sds_list[0][0])
burndate_data = burndate_handle.ReadAsArray()

qa_handle = gdal.Open(sds_list[2][0])
qa_data = qa_handle.ReadAsArray()

# Array can be handled with Numpy now
print(np.shape(burndate_data))
print(qa_data.dtype)

# Clean up when done
del qa_data, qa_handle, burndate_data, burndate_handle
```

Example 3: MATLAB code to read the MCD64A1 *Burn Date* SDS using the MATLAB routine `hdfread`. This is probably the easiest way to read individual HDF SDSs in MATLAB.

```
mcd64a1_file = 'MCD64A1.A2006213.h20v11.061.2021105210759.hdf'

% read burn date layer in one shot
burn_date = hdfread(mcd64a1_file, 'Burn Date');

% display burn date (transposed so that North appears on top)
imagesc(burn_date.');
```

Example 4: Longer version of MATLAB code to read the MCD64A1 *Burn Date* layer. This is probably the better approach to use if multiple SDSs or multiple spatial subsets of an SDS will be read since the HDF file will be opened and closed only once. (The shorter approach using `hdfread` requires that the file be opened and closed for each read.)

```
mcd64a1_file = 'MCD64A1.A2006244.h31v10.061.2021106034604.hdf'

sd_id = hdfsd('start', mcd64a1_file, 'DFACC_RDONLY');

sds_index = hdfsd('nametoindex', sd_id, 'Burn Date');
sds_id = hdfsd('select', sd_id, sds_index);

% prepare to read entire SDS (always 2400 x 2400 pixels in size)
start = [0,0];
edges = [2400,2400];

[burn_date, status] = hdfsd('readdata', sds_id, start, [], edges);
status = hdfsd('endaccess', sds_id);

status = hdfsd('end', sd_id);

% display burn date (transposed so that North appears on top)
imagesc(burn_date.');
```

Example 5: C code for reading MCD64A1 burn date layer using HDF library functions.

```
#include <stdio.h>
#include <stdlib.h>
#include "mfhdf.h"

#define ROWS 2400
#define COLS 2400

main(int argc, char **argv)
{
    int32 sd_id, sds_index, sds_id;
    int32 rank, data_type, nattr, dim_sizes[MAX_VAR_DIMS];
    int32 start[2], int32 edges[2];

    char *infile;
    int i, j;
    long nburn;
    uint16 burn_date[ROWS][COLS];

    infile = "MCD64A1.A2006244.h31v10.061.2021106034604.hdf";

    if ((sd_id = SDstart(infile, DFACC_READ)) == FAIL) exit(1);

    start[0] = start[1] = 0;
    edges[0] = ROWS;
    edges[1] = COLS;

    if ((sds_index = SDnametoindex(sd_id, "Burn Date")) == FAIL) exit(2);
    if ((sds_id = SDselect(sd_id, sds_index)) == FAIL) exit(3);
    if (SDgetinfo(sds_id, (char *) NULL, &rank, dim_sizes, &data_type,
                 &nattr) == FAIL) exit(4);

    /* check rank and data type */
    if (rank != 2) exit(5);
    if (data_type != DFNT_UINT16) exit(6);

    if (SDreaddata(sd_id, start, NULL, edges,
                  (void *) burn_date) == FAIL) exit(7);

    if (SDendaccess(sd_id) == FAIL) exit(8);
    if (SDend(sd_id) == FAIL) exit(9);

    /* simple example: count burned grid cells */
    nburn = 0L;
    for (i = 0; i < ROWS; i++) {
        for (j = 0; j < COLS; j++)
            if (burn_date[i][j] > 0) nburn++;
    }

    printf("%d burned grid cells.\n", nburn);

    exit(0);
}
```

3.2 GeoTIFF subset for GIS visualization and analysis: MCD64monthly

A user-friendly GeoTIFF version of the MCD64 product is derived from the standard MCD64A1 HDF version by University of Maryland. The GeoTIFF files are reprojected in Plate-Carrée projection and cover a set of sub-continental windows (Figure 4). A table containing the regions covered and bounding coordinates of the 24 windows is available in Appendix A.

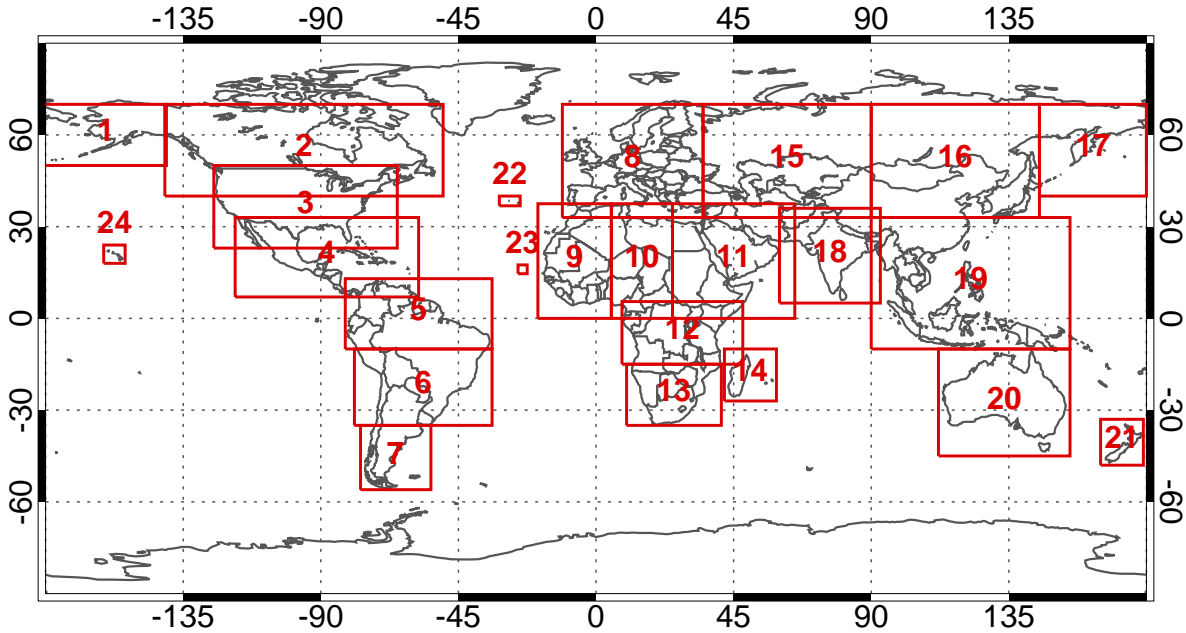


Figure 4: Coverage of the GeoTIFF subsets. A table of bounding coordinates is available in Appendix A.

3.2.1 Naming Convention

The GeoTIFF files follow a naming convention similar to the official MCD64A1 product. However, as the GeoTIFF files are obtained by mosaicing, resampling, and reprojecting several tiles of the original product, the processing time is not available. Example product file names are:

```
MCD64monthly.A2000306.Win01.061.burndate.tif  
MCD64monthly.A2000306.Win01.061.ba_qa.tif
```

where

MCD64monthly = monthly GeoTIFF version of MCD64A1
A2000306 = year and ordinal date of the starting day of the month covered by the product: 306 is the ordinal date of Nov 1, hence 2000306 means that the product covers November 2000.
Win01 = spatial extent: the file covers window 1 (Alaska)
061 = version identifier (Collection 6.1)
burndate/ba_qa = file content: unlike HDF, GeoTIFF files contain a single layer. Currently, two layers of the original product are available as GeoTIFF files: *Burn Date* and *QA*.

3.2.2 Example Code

Example 6: IDL code to read the GeoTIFF MCD64monthly *Burn Date* product. Although not shown in this example, the IDL `QUERY_TIFF` function can be used to determine information about the GeoTIFF image without having to read it into memory.

```
infile = 'MCD64monthly.A2016183.Win13.061.burndate.tif'

; read entire image
burn_date = read_tiff(infile, GEOTIFF=geo)

; now read just a spatial subset
burn_date_subset = read_tiff(infile, SUB_RECT = [1000, 1000, 400, 400])

help, burn_date
help, burn_date_subset
help, geo, /STRUCT
```

The code produces the following output:

```
BURN_DATE          INT          = Array[7055, 4552]
BURN_DATE_SUBSET   INT          = Array[400, 400]
** Structure <18147a8>, 10 tags, length=120, data length=114, refs=1:
  MODELPIXELSCALETAG
                        DOUBLE   Array[3]
  MODELTIEPOINTTAG
                        DOUBLE   Array[6, 1]
  GTMODELTYPEPEGEOKEY
                        INT       2
  GTRASTERTYPEPEGEOKEY
                        INT       2
  GTCITATIONGEOKEY
                        STRING    'Geographic (Longitude, Latitude) Unspe'...
  GEOGRAPHICTYPEPEGEOKEY
                        INT       32767
  GEOGGEODETICDATUMGEOKEY
                        INT       32767
  GEOGANGULARUNITSGEOKEY
                        INT       9102
  GEOGSEMIMAJORAXISGEOKEY
                        DOUBLE    0.0000000
  GEOGSEMIMINORAXISGEOKEY
                        DOUBLE    0.0000000
```

3.3 Shapefile subset for GIS visualization and analysis: MCD64monthly

Shapefiles of the MCD64A1 *Burn Date* layer are derived from the monthly GeoTIFF files by the University of Maryland. The shapefiles are available with the same projection (Plate-Carrée) and geographic extent used for the GeoTIFF sub-continental windows (Figure 4).

3.3.1 Naming Convention

The shapefile naming convention is identical to the GeoTIFF naming convention. Each shapefile consists of multiple files which must remain in the same subdirectory. For convenience, shapefiles are distributed as a zipped tar archive file (".tar.gz") containing the four shapefile elements. MCD64monthly shapefile archives are named as follows:

```
MCD64monthly.A2000306.Win01.061.burndate.shapefiles.tar.gz
```

which in turn contains the following files:

```
MCD64monthly.A2000306.Win01.061.burndate.shp  
MCD64monthly.A2000306.Win01.061.burndate.shx  
MCD64monthly.A2000306.Win01.061.burndate.prj  
MCD64monthly.A2000306.Win01.061.burndate.dbf
```

where

MCD64monthly = monthly shapefile version of MCD64A1

A2000306 = year and ordinal date of the starting day of the calendar month covered by the product (here November 2000).

Win01 = spatial extent: the file covers window 1 (Alaska)

061 = version identifier (Collection 6)

burndate = file content.

3.4 MCD64CMQ Climate Modeling Grid Burned Area Product

The CMG burned area product is a gridded summary intended for use in regional and global modeling.

3.4.1 Naming Convention

The MCD64CMQ monthly product files follow the standard MODIS product naming convention. Examples:

MCD64CMQ.A2003213.061.2022183041945.hdf	<i>August 2003 product file</i>
MCD64CMQ.A2003214.061.2022183041945.hdf	<i>August 2004 product file</i>

3.4.2 Global Grid

Each data layer has 720 rows and 1440 columns comprising a global 0.25° grid. The center of the upper left grid cell is located at longitude 179.875°W, 89.875°N. One data layer has an additional dimension (i.e., it is three dimensional) as described below.

3.4.3 Data Layers

Each product file nominally contains four data layers (*BurnedArea*, *QA*, *UnmappedFraction*, and *LandCoverDist*), each stored as a separate HDF4 Scientific Data Set (SDS). Note that the *LandCoverDist* SDS will be absent from the most recent MCD64CMQ product files due to the ~1-year forward production lag in the MCD12Q1 annual land cover product used to populate this layer. Such incomplete MCD64CMQ product files have a global string attribute named *LandCoverNote* and will be reprocessed when the relevant annual MCD12Q1 product becomes available.

BurnedArea: Monthly area burned. The scaled values stored in this SDS must be multiplied by a factor of 0.01 to obtain burned area in hectares.

QA: 8-bit quality assurance bit field. 0 = water, 1 = unprocessed land, 2 = processed land.

UnmappedFraction: Combined spatial and temporal fraction of the unmapped land area within each grid cell [percent]. Specifically, this quantity is the average number of days that could be mapped during the one-month product period over all 500-m land grid cells falling within each 0.25° bin, divided by the number of days in the product calendar month. The resulting proportion is expressed as a percentage.

Note that the unmapped fraction does not merely tally those 500-m grid cells in the MCD64A1 product classified as *unmapped* (such grid cells have a value of -1 in the MCD64A1 *Burn Date* SDS), for which the number of days mapped is zero. Rather, the quantity represents an average over *all* 500-m land grid cells, whether they are entirely unmapped, partially mapped due to a shortened mapping period (bit 2 set in the MCD64A1 *QA* SDS), or fully mapped during the product period.

Unprocessed land grid cells (see *QA* layer above) will have an unmapped fraction of 100%.

LandCoverDist: A breakdown (to the nearest percent) of the area burned in each grid cell by the 16 different UMD land cover classes available in the Collection 6 MCD12Q1 land cover product. These classes, which have been slightly modified for Collection 6, are shown below. The number in each row is the index into the specific plane of the three-dimensional *LandCoverDist* array that contains the percentage of the area burned for the corresponding land cover type.

0	water	8	woody savannas
1	evergreen needleleaf forests	9	savannas
2	evergreen broadleaf forests	10	grasslands
3	deciduous needleleaf forests	11	permanent wetlands
4	deciduous broadleaf forests	12	croplands
5	mixed forests	13	urban and built-up
6	closed shrublands	15	barren
7	open shrublands	16	unclassified

Note: The Collection 6 MCD12Q1 UMD land cover layer suffers from a bug that often assigns 500-m grid cells an invalid class value of 14 (the IGBP “cropland/natural vegetation mosaics” class).² This incorrect class propagates into the MCD64CMQ product, and we therefore strongly advise users to ignore the LandCoverDist layer until the problem is corrected. In the interim all new C6 MCD64CMQ product files are being generated without the LandCoverDist layer. We will regenerate the MCD64CMQ product using the corrected Collection 6.1 MCD12Q1 product when it becomes available in 2022.

3.4.4 Metadata

File-level metadata are stored as global attributes in the HDF product files (Table 4).

Table 4: MCD64CMQ metadata stored as standard global HDF attributes.

Attribute Name	Description
ShortName	Short name of product (“MCD64CMQ”).
Instrument	Instrument name (“MODIS”).
BinSize	Global grid bin size in degrees (0.25).
StartDate	Start date of monthly product to nearest second.
EndDate	End date of monthly product to nearest second.
NumInputBA	Number of MCD64A1 input files (nominally 268).
InputPointerBA	Comma-separated list of MCD64A1 input file names.
NumInputLC	Number of MCD12Q1 input files.
InputPointerLC	Comma-separated list of MCD12Q1 input file names.
LandCoverNote	String attribute present only in product files lacking the <i>LandCoverDist</i> SDS. Example value: “2018 MCD12Q1 product not available at time of processing”.

²See https://landweb.modaps.eosdis.nasa.gov/cgi-bin/QS/new/pages.cgi?name=known_issues, case number PM_MCD12_19074.

3.4.5 Example Code

Example 7: IDL code to read the MCD64CMQ *BurnedArea* SDS.

```
pro cmg_demo
  COMPILE_OPT STRICTARR, STRICTARRSUBS

  mcd64cmq_file = 'MCD64CMQ.A2018001.006.2018149165520.hdf'

  sd_id = HDF_SD_START(mcd64cmq_file, /READ)

  index = HDF_SD_NAME_TO_INDEX(sd_id, 'BurnedArea')
  sds_id = HDF_SD_SELECT(sd_id, index)

  ; read SDS scale factor attribute
  attr_index = HDF_SD_ATTR_FIND(sds_id, 'scale_factor')
  HDF_SD_ATTR_INFO, sds_id, attr_index, DATA=scale_factor
  ; IDL returns scalar numeric attributes as a 1-element vector
  ; next line will convert it to a scalar
  scale_factor = scale_factor[0]

  ; read SDS units attribute
  attr_index = HDF_SD_ATTR_FIND(sds_id, 'units')
  HDF_SD_ATTR_INFO, sds_id, attr_index, DATA=units

  ; read scaled data
  HDF_SD_GET_DATA, sds_id, ScaledAburn
  HDF_SD_END_ACCESS, sds_id

  HDF_SD_END, sd_id

  help, ScaledAburn, scale_factor, units

  Aburn = scale_factor * temporary(ScaledAburn)
  help, Aburn

  ; calculate total area burned worldwide
  Atotal = total(Aburn, /DOUBLE) ; ha

  print, Atotal/1.0e6, FORMAT='("Total burned area is",F6.2," Mha")
end
```

The code produces the following output:

```
SCALEDABURN      LONG      = Array[1440, 720]
SCALE_FACTOR     FLOAT      =      0.0100000
UNITS            STRING     = 'hectares'
ABURN            FLOAT      = Array[1440, 720]
Total burned area is 26.91 Mha
```

Example 8: IDL code to generate vectors containing the the latitude and longitude at the center of each 0.25° grid cell.

```
pro cmg_nav
  COMPILE_OPT STRICTARR, STRICTARRSUBS

  XGRID = 1440
  YGRID = 720
  bin_size = 0.25          ; degrees

  lat = (90.0 - bin_size/2) - bin_size * indgen(YGRID)    ; degrees
  lon = (-180.0 + bin_size/2) + bin_size * indgen(XGRID)  ; degrees

  ; print center latitude and longitude of first 24 rows/columns of grid

  help, lat
  print, lat[0:23], FORMAT='(8F9.3) '

  help, lon
  print, lon[0:23], FORMAT='(8F9.3) '
end
```

The code produces the following output:

```
LAT          FLOAT      = Array[720]
 89.875   89.625   89.375   89.125   88.875   88.625   88.375   88.125
 87.875   87.625   87.375   87.125   86.875   86.625   86.375   86.125
 85.875   85.625   85.375   85.125   84.875   84.625   84.375   84.125
LON          FLOAT      = Array[1440]
-179.875 -179.625 -179.375 -179.125 -178.875 -178.625 -178.375 -178.125
-177.875 -177.625 -177.375 -177.125 -176.875 -176.625 -176.375 -176.125
-175.875 -175.625 -175.375 -175.125 -174.875 -174.625 -174.375 -174.125
```

4 Obtaining the MODIS Burned Area Products

All MODIS products are available free of charge. The MODIS Burned Area Product is available for ordering from the Land Processes Distributed Active Archive Center (LP-DAAC).³ Additionally, a secure FTP (SFTP) server is maintained by the University of Maryland, primarily to assist science users who need to regularly download large volumes of data.

4.1 Downloading the products from the fuoco SFTP server

The MODIS burned area product is available for download in either HDF, GeoTIFF, or Shapefile format from the University of Maryland `fuoco` SFTP (formerly FTP) server. Connect using the following information:

Server: `fuoco.geog.umd.edu`

Login name: `fire`

Password: `burnt`

Note: As a consequence of our mandatory transition from FTP to SFTP⁴, most users will not be able to download product files using their regular web browser without first installing a third-party browser extension.

For downloading product files you can use the command-line `sftp` and `lftp` clients, or freely available GUI file transfer software such as FileZilla (<https://filezilla-project.org>) and Cyberduck (<https://cyberduck.io/>). SFTP-capable commercial software is also available and includes the examples listed below.

For Windows:

- SmartFTP (<https://www.smartftp.com/>)
- WinSCP (<https://winscp.net>)

For MacOS:

- ForkLift (<https://binarynights.com/>)
- Commander One (<https://mac.eltima.com/file-manager.html>)
- Transmit (<https://panic.com/transmit/>)
- Viper FTP (<https://viperftp.com/>)
- Flow (<http://fivedetails.com/>)

³<https://lpdaac.usgs.gov/>

⁴In our case the change in protocol was not driven by a need for encryption – here such a requirement would be pointless given that the data are intended to be freely available and we openly share the password – but instead to avoid various port-level server vulnerabilities associated with FTP.

Once connected, enter the data subdirectory to access the following abridged directory tree:

```
.
|-- GFED
|-- MODIS
|   |-- C6
|   |-- C61
|       |-- docs
|       |-- MCD64A1
|           |-- HDF
|           |   |-- h00v08, h00v09, ..., h35v10
|           |-- SHP
|           |   |-- Win01, Win02, ..., Win24
|           |   |-- 2000, 2001, 2002, ...
|           |-- TIFF
|           |   |-- Win01, Win02, ..., Win24
|           |   |-- 2000, 2001, 2002, ...
|           |-- MCD64CMQ
|-- VIIRS
|-- VIRS
```

Note: The SHP and TIFF subdirectories are currently empty but will be populated later this year.

4.1.1 HDF Files

As can be seen from the directory tree, the file system on this server is structured to organize the HDF MCD64A1 product hierarchically by tile. Specifically, all MCD64A1 HDF product files for a given tile are located in the directory MODIS/C6/MCD64A1/HDF/hHHvVV, where HH is the horizontal tile coordinate and VV is the vertical tile coordinate. For example, the Collection 6 MCD64A1 HDF files for MODIS tile h08v05 will be found in the directory MODIS/C61/MCD64A1/HDF/h08v05.

4.1.2 GeoTIFF files and Shapefiles

The layout of GeoTIFF files and Shapefiles on the server is structured to organize the data hierarchically by window, and then by year. All the data for the same window from the same year is located (for GeoTIFF files and shapefiles, respectively) in the directories MODIS/C61/MCD64A1/TIF/WinXX/YYYY/ and MODIS/C61/MCD64A1/SHP/WinXX/YYYY/, where XX is the number of the window (Figure 4) and YYYY is the year. For example, the directory MODIS/C61/MCD64A1/Win01/2001 contains all of the GeoTIFF files for the year 2001 for window 01 (Alaska).

4.1.3 Example sftp command line session

Here we use wildcards with the SFTP `get` command to download the January 2013 MCD64A1 HDF product for the entire globe (i.e., all 268 MODIS land tiles for which the product is produced).

```
$ sftp fire@fuoco.geog.umd.edu
Password:
Connected to fuoco.geog.umd.edu.
sftp> cd data
sftp> ls
GFED  MODIS  VIIRS  VIRS
sftp> cd MODIS/C61/MCD64A1/HDF
sftp> progress
Progress meter disabled
sftp> get h??v??/MCD64A1.A2013001*
Fetching /data/MODIS/C61/MCD64A1/HDF/h00v08/MCD64A1.A2013001.h00v08.061.2021...
      to MCD64A1.A2013001.h00v08.061.2021013041920.hdf
Fetching /data/MODIS/C61/MCD64A1/HDF/h00v09/MCD64A1.A2013001.h00v09.061.2021...
      to MCD64A1.A2013001.h00v09.061.2021013052550.hdf
Fetching /data/MODIS/C61/MCD64A1/HDF/h00v10/MCD64A1.A2013001.h00v10.061.2021...
      to MCD64A1.A2013001.h00v10.061.2021013041341.hdf
      .
      .
      .
Fetching /data/MODIS/C61/MCD64A1/HDF/h35v08/MCD64A1.A2013001.h35v08.061.2021...
      to MCD64A1.A2013001.h35v08.061.2021013053444.hdf
Fetching /data/MODIS/C61/MCD64A1/HDF/h35v09/MCD64A1.A2013001.h35v09.061.2021...
      to MCD64A1.A2013001.h35v09.061.2021013053444.hdf
Fetching /data/MODIS/C61/MCD64A1/HDF/h35v10/MCD64A1.A2013001.h35v10.061.2021...
      to MCD64A1.A2013001.h35v10.061.2021013042434.hdf
sftp> bye
```

5 Working with the product in ENVI 5.5

Provided here are instructions for opening the MCD64A1 HDF, GeoTIFF, and Shapefile products for both the standard and Classic ENVI 5.5 interfaces.

5.1 MCD64A1 (HDF)

HDF MODIS products are only partially supported in ENVI. To open them, select *File* → *Open As Scientific Formats* → *HDF4*. In the Dataset Browser (Figure 5), load the *Data Field* (e.g., *Burn Date*) into the Raster field (center top button). Opened as a generic HDF file, all geographic information is lost. To restore this information the projection parameters must be entered manually.

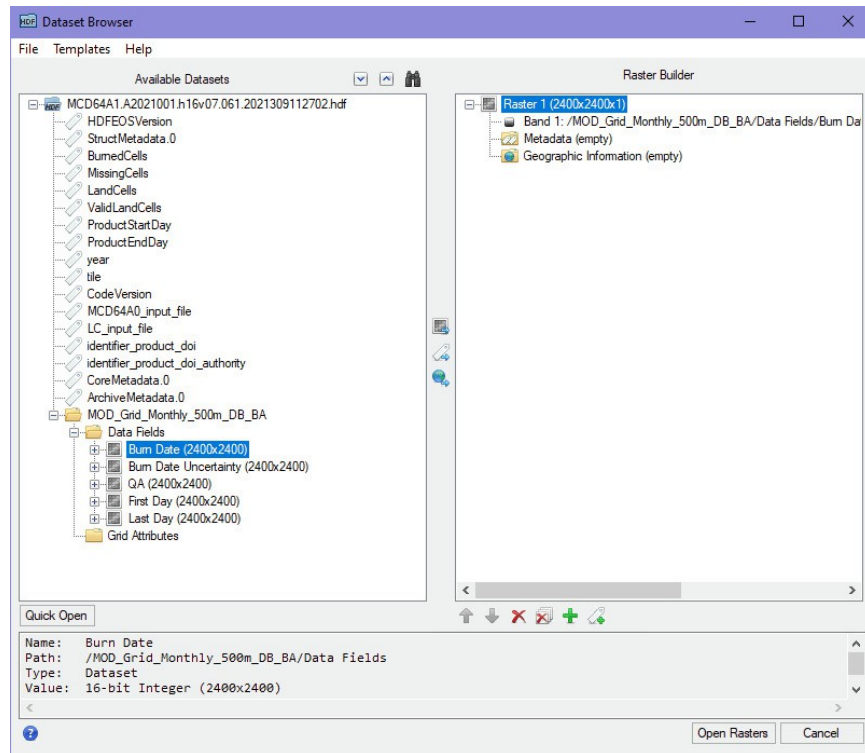


Figure 5: ENVI 5.5 example Dataset Browser.

ENVI Classic

HDF MODIS products are only partially supported in ENVI Classic. To open them, select *File* → *Open External Files* → *Generic Formats* → *HDF*. Select the layers of interest, which are labeled by their HDF4 long-name attribute, e.g., “ordinal day of burn” (Figure 6). Opened as a generic HDF file, all geographic information is lost. To restore this information the projection parameters must be entered manually.

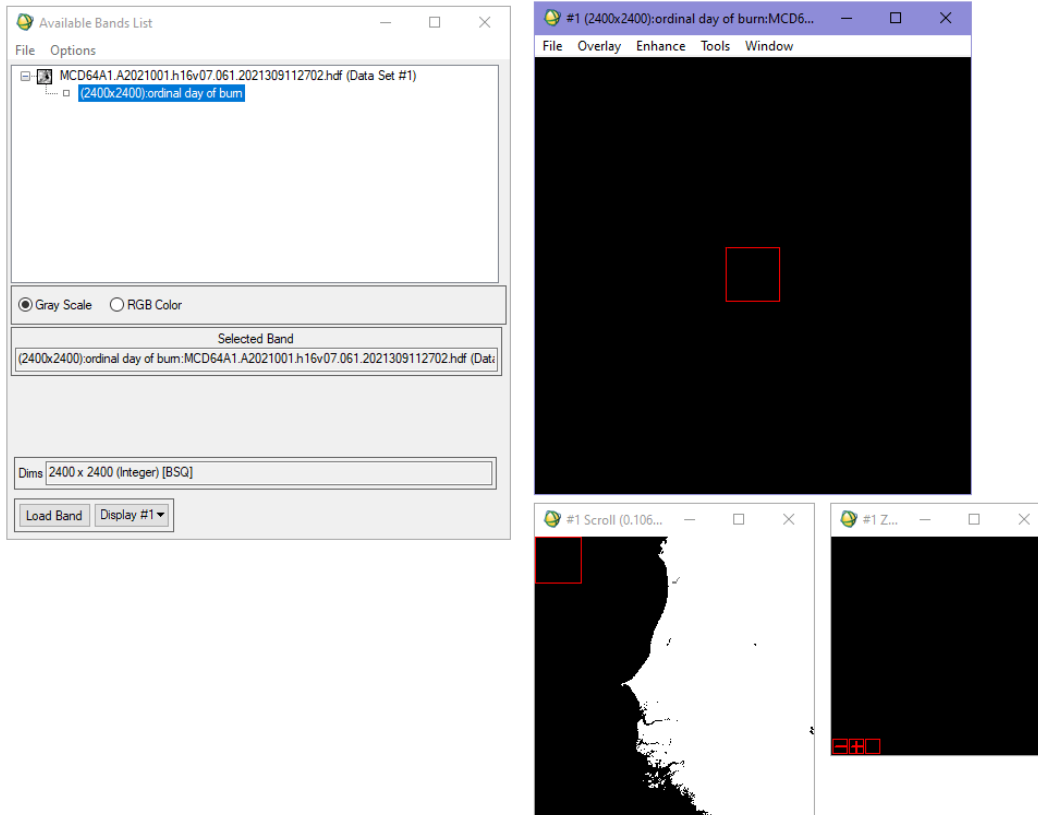


Figure 6: ENVI 5.5 Classic example Dataset Browser and image display.

5.2 MCD64monthly (GeoTIFF)

The GeoTIFF product files are fully supported in ENVI. Use the *File* → *Open...* menu to open them.

ENVI Classic

The GeoTIFF product files are fully supported in ENVI Classic. Use the *File* → *Open Image File* menu to open them.

5.3 MCD64monthly (Shapefile)

Shapefiles are fully supported in ENVI (but not ENVI Classic – see below). To open a Shapefile, simply go through the *File* → *Open...* menu. To view metadata or attributes, right-click on the file name to open the sub-menu (Figure 7). To change the vector colors, select *Properties* on the sub-menu.

ENVI Classic

Shapefiles are not directly supported in ENVI Classic, rather they are converted to the ENVI Vector File (“*.evf*”) format during ingest. To load a shapefile, select *Vector* → *Open Vector File* and choose the Shapefile wildcard filter setting (“**.shp*”). When prompted to set “Import Vector Files Parameters”, set the desired

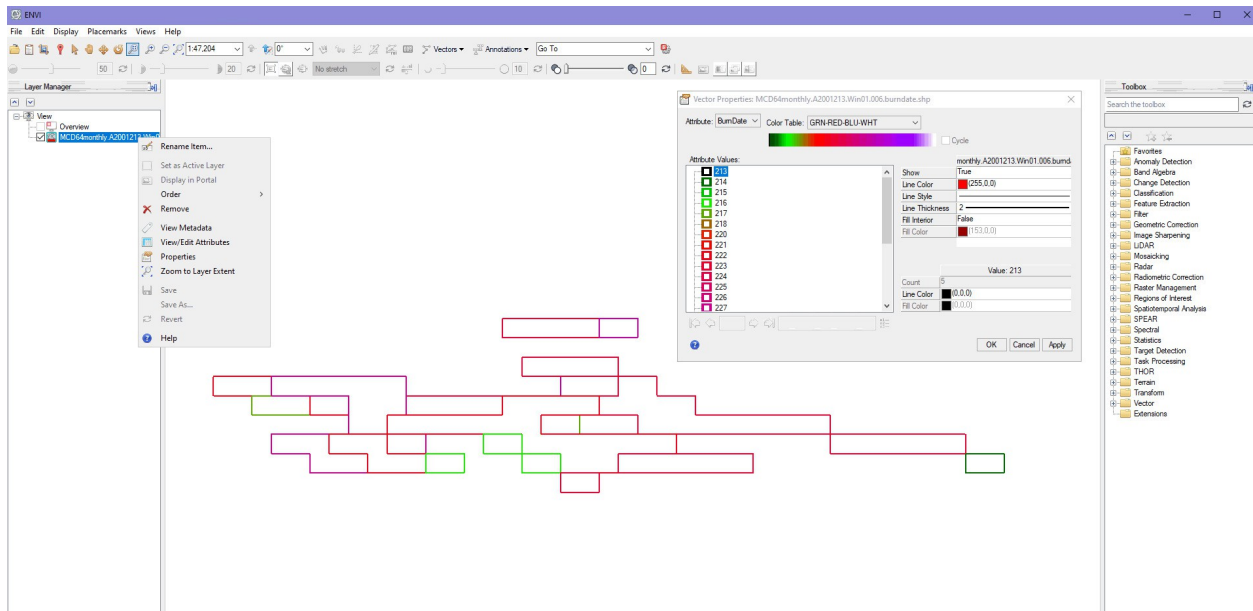


Figure 7: ENVI 5.5 Shapefile (colored polygons) with the available sub-menu and vector properties window. The different colored polygons represent the individual day of burn. Other color options are available.

layer name and output file location and select “OK”. Do not adjust the projection information; the default values correspond to the Plate-Carrée projection used by the GeoTIFF files. Use the “Available Vectors List” (*Vector* → *Available Vectors List*) to overlay the vectors on an existing display, or display them in a new window.

6 Working with the product in ArcGIS

Provided here are instructions for opening the MCD64A1 HDF, GeoTIFF, and Shapefile products in ArcGIS Pro 2.6.1 and ArcGIS ArcMap Desktop 10.8.1.

6.1 MCD64A1 (HDF)

6.1.1 ArcGIS Pro

HDF-EOS files are fully supported in ArcGIS Pro. To open them, simply go through the *Add Data* → *Multidimensional Raster Data* menu to import the desired HDF file(s) (Figure 8) and select the desired layer(s) to import (Figure 9). Geographic information is automatically applied to the data.

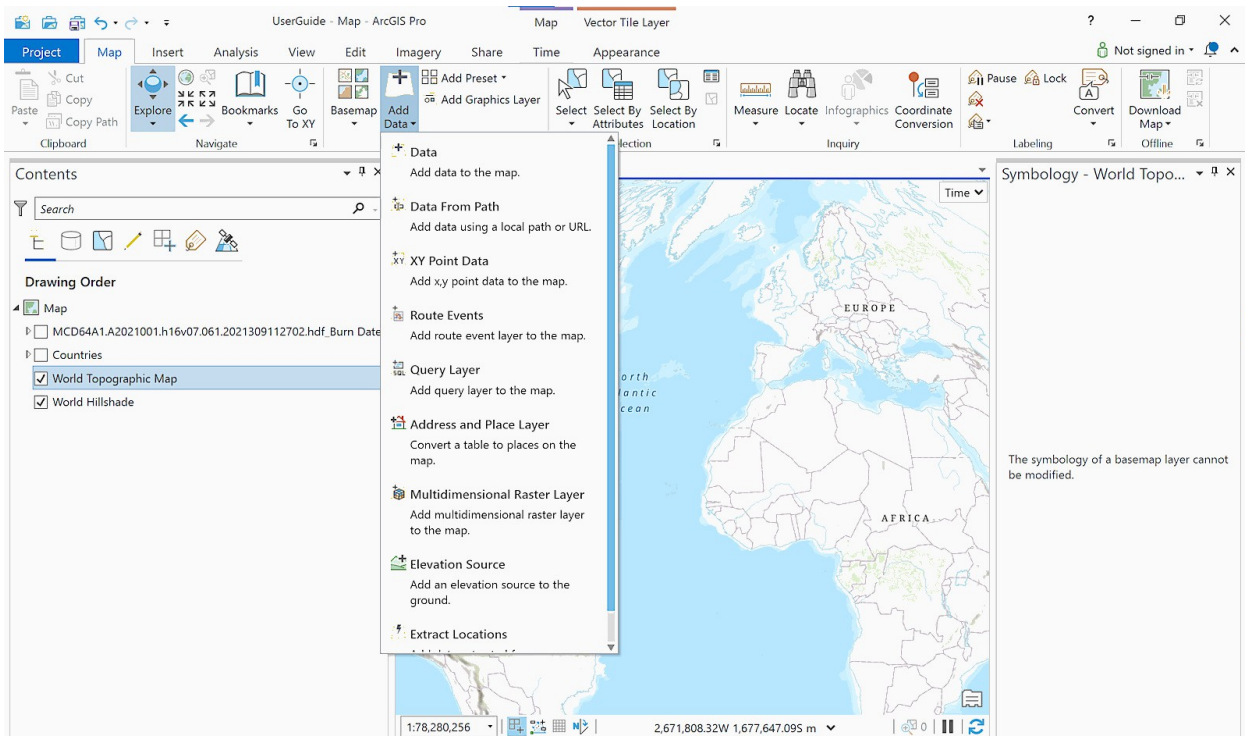


Figure 8: Importing HDF data into ArcGIS Pro.

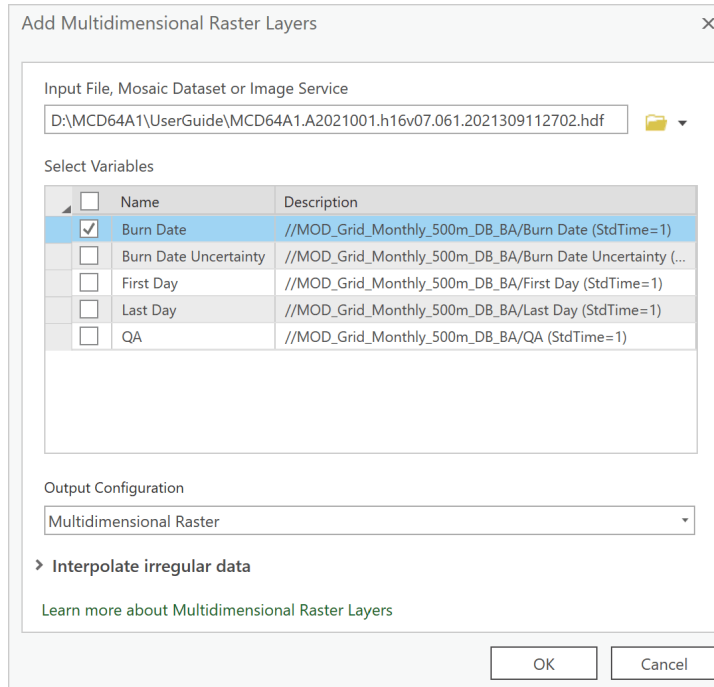


Figure 9: Selecting the HDF *Burn Date* layer in ArcGIS Pro.

In order to display the burned areas only (Figure 10), go to *Symbology* → *Unique Values* and change the following values to “No Color”:

- 0 - unburned
- -1 - missing data
- -2 - water

ArcGIS Pro will display the burn date as the ordinal day of the product year in either individual colors or in the same color depending on your settings.

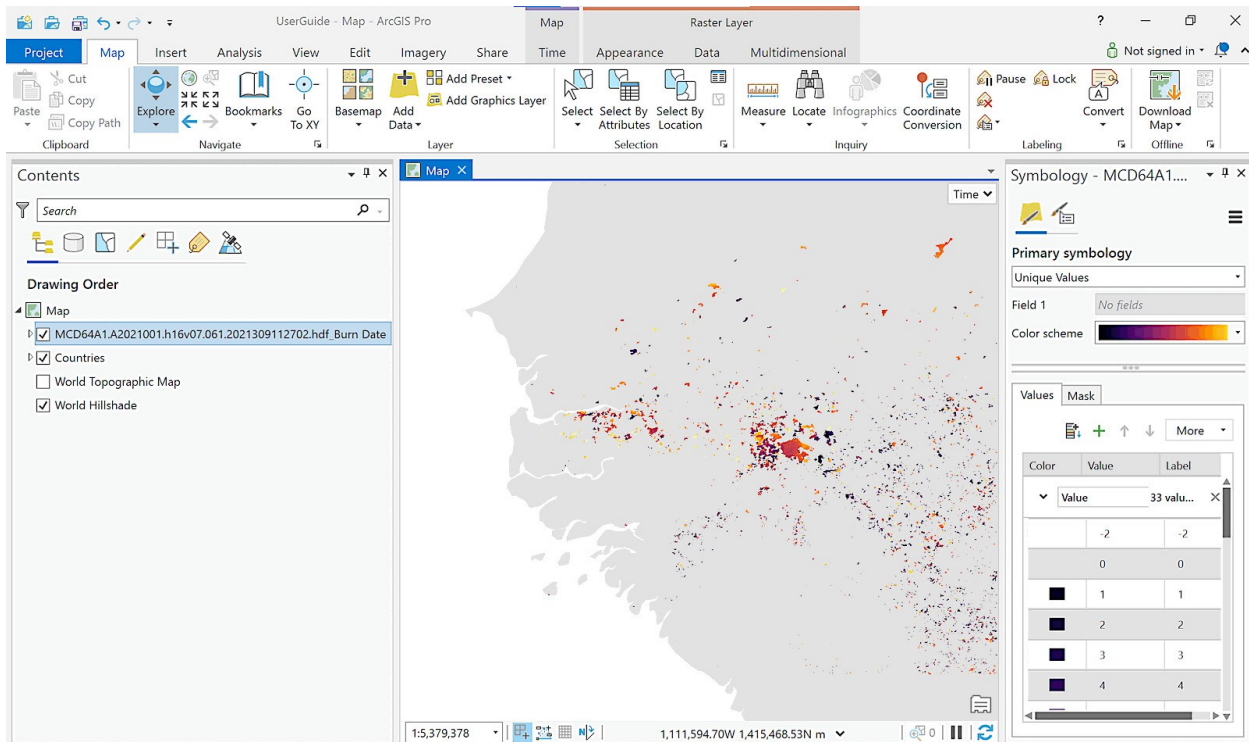


Figure 10: January 2021 MCD64A1 *Burn Date* layer for MODIS tile h16v07 displayed in ArcGIS Pro.

6.1.2 ArcGIS ArcMap Desktop

HDF-EOS files are fully supported in ArcMap. To open them, simply go through the *Map* → *Add Data* menu and select the desired layers to import (e.g., *Burn Date*). Geographic information is automatically applied to the data.

6.2 MCD64monthly (GeoTIFF)

The MCD64 GeoTIFF files can be directly loaded into ArcGIS through *Add Data*. In order to display the burned areas only, go to *Symbology* → *Unique Values* and change the following values to “No Color”:

- 0 - unburned
- -1 - missing data
- -2 - water

ArcGIS will display the burn date as the ordinal day of the product year in either individual colors or in the same color depending on your settings.

6.2.1 Area of Interest (AoI)

In order to reduce the file size of the regional GeoTIFF and focus on a specific region, an “area of interest” (AoI) spatial subset can be extracted.

ArcGIS Pro

1. Display desired AoI
2. Highlight the TIFF layer by clicking its name in the *Contents* pane
3. Select *Data* → *Export Raster* → *Clipping Geometry* → *Current Display Extent* → *Export Data*

The “Export Raster Data” window will open (Figure 11).

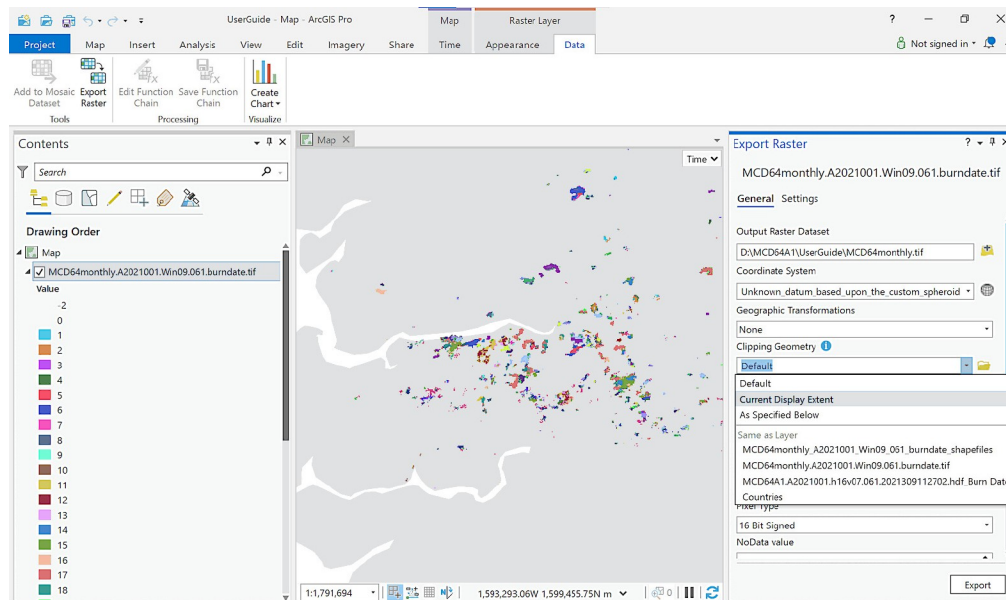


Figure 11: ArcGIS Pro export raster window.

ArcGIS ArcMap Desktop

1. Display desired AoI
2. Right mouse-click the data layer
3. Select *Data* → *Export Data*

The “Export Raster Data” window will open (Figure 12). Check both data frames options to *Current* and choose TIFF in the *Format* field.

6.3 MCD64monthly (Shapefile)

The Shapefiles can be loaded directly into ArcGIS and ArcMap via *Add Data*. To change the appearance of the file, select *Layer Properties* → *Symbology* → *Quantities* → *Graduated Colors*. Optionally, to remove the outlines of the data, right click a symbol in the *Graduated Colors* panel and select “Properties For All Symbols”, then set “Outline Color” to “No Color”. An example is shown in Figure 13.

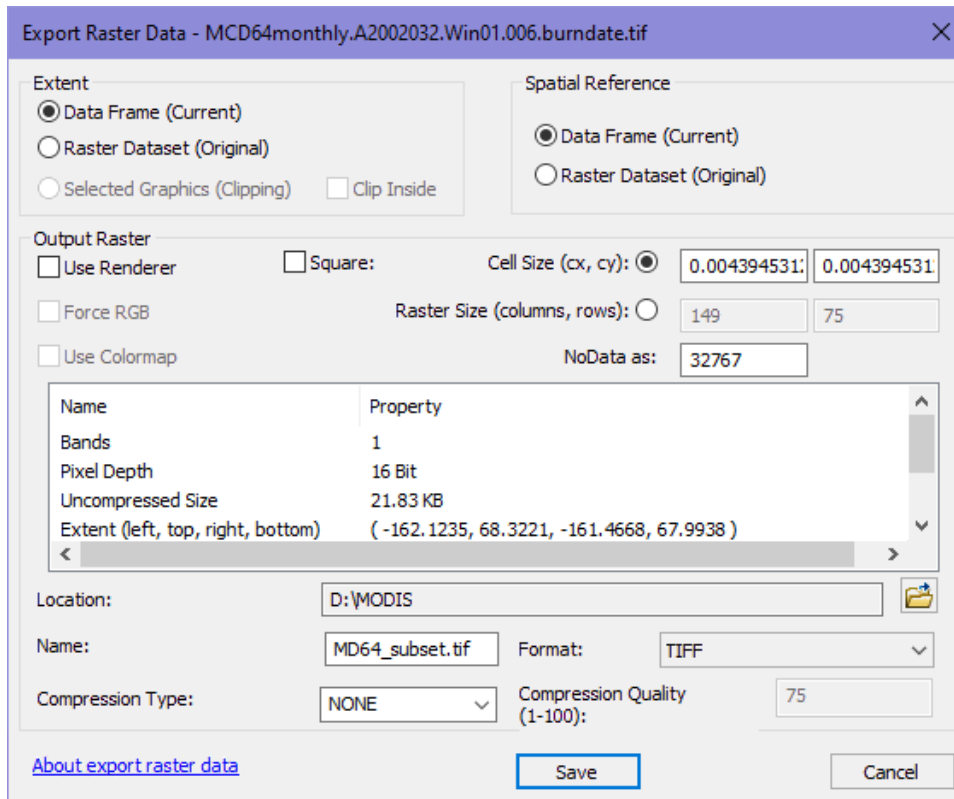


Figure 12: ArcGIS ArcMap export raster window.

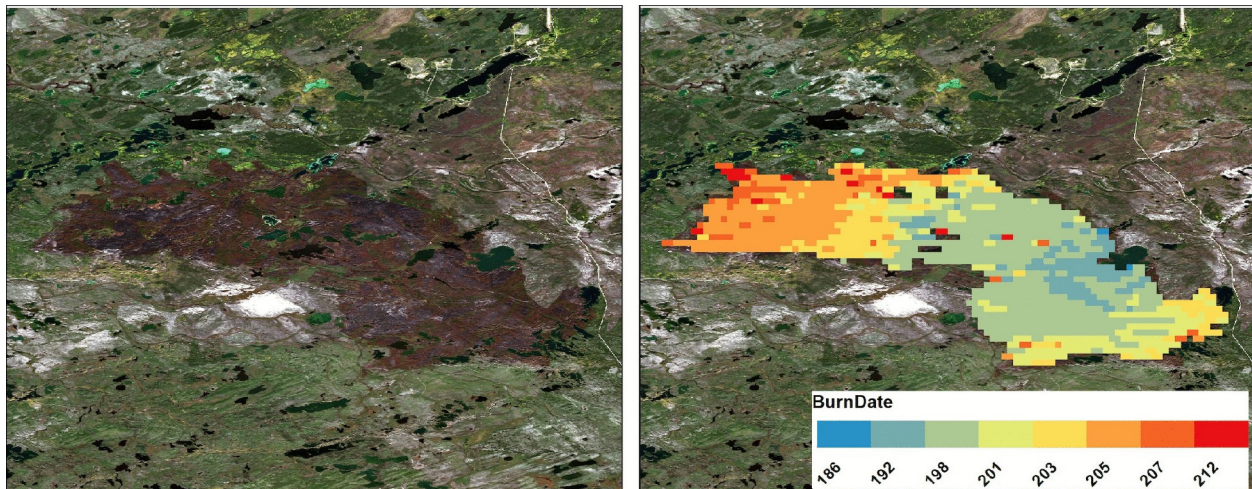


Figure 13: Left: True-color (R, G, B) Sentinel-2 MSI scene acquired 19 September 2019 in Saskatchewan, Canada. Right: MCD64monthly September Shapefile superimposed over the burned area. Older burned areas are shown in blue tones, while newer burns are shown in red tones.

7 Validation of the MODIS Burned Area Product

The Collection 6 product has been validated at Stage 3 by comparison with Landsat 8 Operational Land Imager (OLI) image pairs acquired 16 days apart that were visually interpreted. These independent reference data were selected using a stratified random sampling approach that allows for probability sampling of Landsat data in both time and in space. A total of 558 Landsat 8 OLI image pairs (1116 images), acquired between 1 March 2014 and 19 March 2015, were selected. Globally, the MCD64A1 product had an estimated 40.2% commission error and 72.6% omission error; the prevalence of omission errors is reflected by a negative estimated bias of the mapped global area burned relative to the Landsat independent reference data (-54.1%). Globally, the standard errors of the accuracy metrics were less than 6%. The product accuracy was also characterized at coarser scale using metrics derived from the regression between the proportion of coarse resolution grid cells detected as burned by MCD64A1 and the proportion mapped in the Landsat 8 interpreted maps. The errors of omission and commission observed at 30-m resolution compensate to a considerable extent at coarser resolution, as indicated by the coefficient of determination ($r^2 > 0.70$), slope (> 0.79) and intercept (-0.0030) of the regression between the MCD64A1 product and the Landsat independent reference data in 3-km, 4-km, 5-km, and 6-km coarse resolution cells. The analysis of the deviations between the proportion of area burned mapped by the MCD64A1 product and by the independent reference data, performed using 3-km \times 3-km and 6-km \times 6-km coarse resolution cells, indicates that the large negative bias in global area burned is primarily due to the systematic underestimation of smaller burned areas in the MCD64A1 product. Full details of the product validation may be found in Bochetti et al. (2016) and Boschetti et al. (2019).

8 Known Problems

8.1 Cropland Burning

Burned areas in cropland should generally be treated as low confidence due to the inherent difficulty in mapping agricultural burning reliably. See Hall et al. (2016) for more information about the complications unique to cropland-fire mapping.

8.2 Pre-November 2000 Mission Period

Although the Terra MODIS first began acquiring data in February 2000, crosstalk and calibration remained problematic until early November 2000. For this reason we do not distribute the MODIS burned area product for the mission period preceding November 2000.

8.3 June 2001 Terra MODIS Outage

The June 2001 monthly product is heavily degraded due to extended Terra MODIS outages.

8.4 August 2020 Aqua Outage

A failure of the Aqua formatter-multiplexer unit (FMU) on 16 August 2020 led to the loss of regular science data telemetry for a period of about two weeks. During this time the MODIS instrument remained otherwise functional, and an effort was made to generate the standard Aqua science products from Direct Broadcast Aqua MODIS data collected by Direct Readout ground stations around the world. A representative example of the limited Direct Broadcast coverage obtained during the outage is shown in in Figure 14.

While essentially all Aqua science data over Africa, eastern Asia, Indonesia, and Oceania were lost during the two-week outage period, we do not expect the loss to significantly degrade the MCD64A1 burned area product in these regions since the Terra MODIS continued to function normally.

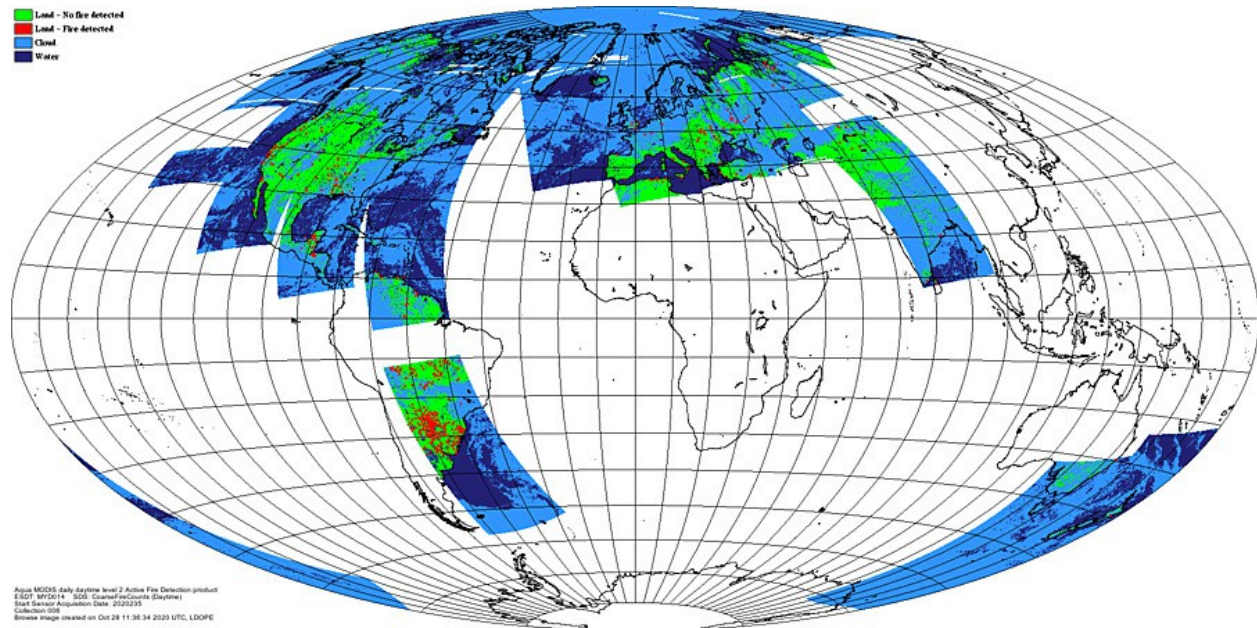


Figure 14: Representative Direct Broadcast coverage available during the 16 August – 2 September 2020 Aqua FMU outage period, using the MODIS active fire (not burned area) product as an example. Fire pixels are shown in red, clear land pixels are shown in green, cloud pixels are shown in light blue, and areas lacking data are shown in white. Browse image courtesy of the LDOPE.

9 Frequently Asked Questions

Is there an existing tool I can use to remap the tiled MODIS products into a different projection?

The now-defunct *MODIS Reprojection Tool* (MRT) and follow-on *HDF-EOS to GeoTIFF Conversion Tool* (HEG) can remap the tiled MODIS products into many different projections; see Section 11.

How do I calculate the latitude and longitude of a grid cell in the Level 3 products?

You can use the online MODLAND Tile Calculator⁵, or perform the calculation as described in Appendix B.

How do I calculate the tile and grid cell coordinates of a specific geographic location (latitude and longitude)?

You can use the online MODLAND Tile Calculator, or perform the calculation as described in Appendix B.

10 References

Boschetti, L., Roy, D. P., Giglio, D. P., Huang, H., Zubkova, M., and Humber, M. L., 2019, Global validation of the collection 6 MODIS burned area product. *Remote Sensing of Environment*, 235, 11490.

Boschetti, L., Stehman, S. V., and Roy, D. P., 2016, A stratified random sampling design in space and time for regional to global scale burned area product validation. *Remote sensing of environment*, 186, 465-478.

Giglio, L., Boschetti, L., Roy, D. P., Humber, M. L., and Justice, C. O., 2018, The Collection 6 MODIS burned area mapping algorithm and product. *Remote Sensing of Environment*, 217, 72-85.

Giglio, L., Loboda, T., Roy, D. P., Quayle, B., and Justice, C. O., 2009, An active-fire based burned area mapping algorithm for the MODIS sensor. *Remote Sensing of Environment*, 113, 408-420.

Hall, J. V., Argueta, F., and Giglio, L., 2021, Validation of MCD64A1 and FireCCI51 cropland burned area mapping in Ukraine. *International Journal of Applied Earth Observation and Geoinformation*, 102, 102443.

Hall, J. V., Loboda, T. V., Giglio, L., and McCarty, G. W., 2016, A MODIS-based burned area assessment for Russian croplands: Mapping requirements and challenges. *Remote Sensing of Environment*, 184, 506-521.

Humber, M., Boschetti, L., and Giglio, L., 2020, Assessing the shape accuracy of coarse resolution burned area identifications. *IEEE Transactions on Geoscience and Remote Sensing*, 58, 15161525.

Roy, D. P., Giglio, L., Kendall, J. D., and Justice, C. O., 1999, A multitemporal active-fire based burn scar detection algorithm. *International Journal of Remote Sensing*, 20, 1031-1038.

⁵<http://landweb.nascom.nasa.gov/cgi-bin/developer/tilemap.cgi>

11 Relevant Web and FTP Sites

- **MODIS Fire and Thermal Anomalies:** General information about the MODIS Fire (Thermal Anomalies) and Burned Area products.
<https://modis-fire.umd.edu/>
- **MODIS Land:** Information about the MODIS Land products.
<https://modis-land.gsfc.nasa.gov/index.html>
- **MODIS Land Product Quality Assessment:** Product quality-assessment (QA) related information, including a very complete archive of known land-product issues with descriptions and examples.
<https://landweb.modaps.eosdis.nasa.gov/cgi-bin/QS/new/index.cgi>
- **HEG: HDF-EOS to GeoTIFF Conversion Tool:** Software for reprojecting tiled HDF-EOS products into many different projections.
<https://wiki.earthdata.nasa.gov/display/DAS/HDF-EOS2+to+HDF-EOS5+Conversion+Tool>
- **MODLAND Tile Calculator:** Online tool for performing forward and inverse mapping of MODIS sinusoidal tiles.
<http://landweb.nascom.nasa.gov/cgi-bin/developer/tilemap.cgi>
- **NASA Earthdata Search:** The primary distribution site for most MODIS products. Formerly Reverb, and before that the Warehouse Inventory Search Tool (WIST), and before that the EOS Data Gateway (EDG).
<https://search.earthdata.nasa.gov/>

Appendix A Coverage of the GeoTIFF subsets

Table 5: Regions and bounding coordinates of the GeoTIFF subsets.

Window	Coverage	Min. Lon.	Max. Lon.	Min. Lat.	Max. Lat.
1	Alaska	-180	-140.5	50	70
2	Canada	-141	-50	40	70
3	USA (Conterminous)	-125	-65	23	50
4	Central America	-118	-58	7	33
5	South America (North)	-82	-34	-10	13
6	South America (Central)	-79	-34	-35	-10
7	South America (South)	-77	-54	-56	-35
8	Europe	-11	35	33	70
9	West and North Africa	-19	5	0	37.5
10	Central and North Africa	5	25	0	37.5
11	East Africa and Arabian Peninsula	25	65	0	37.5
12	Southern Africa (North)	8.5	48	-15	5.5
13	Southern Africa (South)	10	41	-35	-15
14	Madagascar	42	59	-27	-10
15	Russia and Central Asia 1	35	90	33	70
16	Russia and Central Asia 2	90	145	33	70
17	Russia (Kamachatka)	145	180	40	70
18	South Asia	60	93	5	36
19	South East Asia	90	155	-10	33
20	Australia	112	155	-45	-10
21	New Zealand	165	179	-48	-33
22	Azores	-31.6	-24.8	36.8	40
23	Cape Verde Island	-25.5	-22.5	14.6	17.5
24	Hawaii	-161	-154	18	24

Appendix B Coordinate conversion for the MODIS sinusoidal projection

Navigation of the tiled MODIS products in the sinusoidal projection can be performed using the forward and inverse mapping transformations described here. We'll first need to define a few constants:

$R = 6371007.181$ m, the radius of the idealized sphere representing the Earth;

$T = 1111950$ m, the height and width of each MODIS tile in the projection plane;

$x_{\min} = -20015109$ m, the western limit of the projection plane;

$y_{\max} = 10007555$ m, the northern limit of the projection plane;

$w = T/2400 = 463.31271653$ m, the actual size of a "500-m" MODIS sinusoidal grid cell.

B.1 Forward Mapping

Denote the latitude and longitude of the location (in radians) as ϕ and λ , respectively. First compute the position of the point on the global sinusoidal grid:

$$x = R\lambda \cos \phi \quad (1)$$

$$y = R\phi. \quad (2)$$

Next compute the horizontal (H) and vertical (V) tile coordinates, where $0 \leq H \leq 35$ and $0 \leq V \leq 17$ (Section 1.2.2):

$$H = \left\lfloor \frac{x - x_{\min}}{T} \right\rfloor \quad (3)$$

$$V = \left\lfloor \frac{y_{\max} - y}{T} \right\rfloor, \quad (4)$$

where $\lfloor \cdot \rfloor$ is the floor function. Finally, compute the row (i) and column (j) coordinates of the grid cell within the MODIS tile:

$$i = \left\lfloor \frac{(y_{\max} - y) \bmod T}{w} \right\rfloor \quad (5)$$

$$j = \left\lfloor \frac{(x - x_{\min}) \bmod T}{w} \right\rfloor. \quad (6)$$

Note that for all 500-m MODIS products on the sinusoidal grid $0 \leq i \leq 2399$ and $0 \leq j \leq 2399$.

B.2 Inverse Mapping

Here we are given the row (i) and column (j) in MODIS tile H, V . First compute the position of the center of the grid cell on the global sinusoidal grid:

$$x = (j + 0.5)w + HT + x_{\min} \quad (7)$$

$$y = y_{\max} - (i + 0.5)w - VT \quad (8)$$

Next compute the latitude ϕ and longitude λ at the center of the grid cell (in radians):

$$\phi = \frac{y}{R} \quad (9)$$

$$\lambda = \frac{x}{R \cos \phi}. \quad (10)$$

B.3 Applicability to 250-m and 1-km MODIS Products

With the following minor changes the above formulas are also applicable to the higher resolution 250-m and 500-m MODIS tiled sinusoidal products.

250-m grid: Set $w = T/4800 = 231.65635826$ m, the actual size of a “250-m” MODIS sinusoidal grid cell. For 250-m grid cells $0 \leq i \leq 4799$ and $0 \leq j \leq 4799$.

1-km grid: Set $w = T/1200 = 926.62543305$ m, the actual size of a “1-km” MODIS sinusoidal grid cell. For 1-km grid cells $0 \leq i \leq 1199$ and $0 \leq j \leq 1199$.